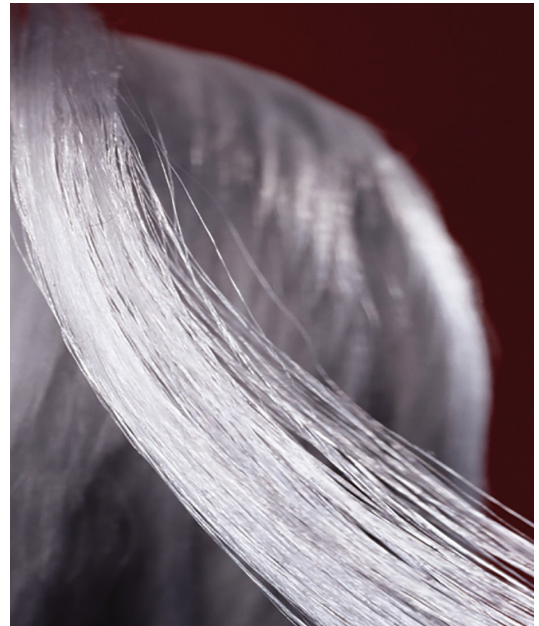


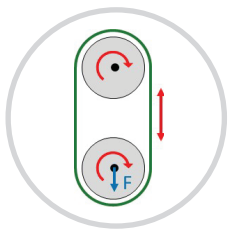
Honeywell Spectra® HC1000 Fiber

Finally a Fiber specifically designed for increased durability and longer life.

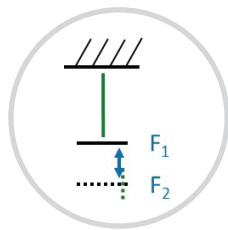
Spectra HC 1000 is a new, state-of-the-art fiber that provides best-in-class bending performance without tradeoffs in other parameters such as abrasion, creep, or tenacity; making it suitable for applications such as offshore platform mooring, deep sea lifting, towing, cranes, and elevators. This improved durability means longer rope life and the ability to create greater value over existing HMPE fiber products, other synthetic fibers, and steel.



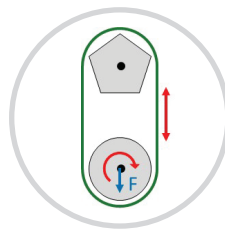
Industry Leading Performance



Bending Fatigue



Tension - Tension Fatigue

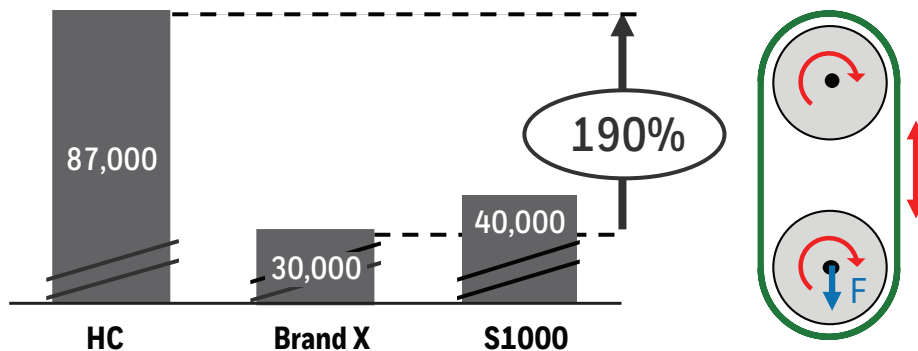


Abrasion Resistance

IMPROVED DURABILITY WITHOUT THE TRADEOFFS

Superior Bending Performance

Spectra® HC fiber has superior bending performance compared to other HMPE fibers in the market. This allows you to use the Spectra® HC fiber for rope applications where repetitive bending has limited the life of synthetic ropes.

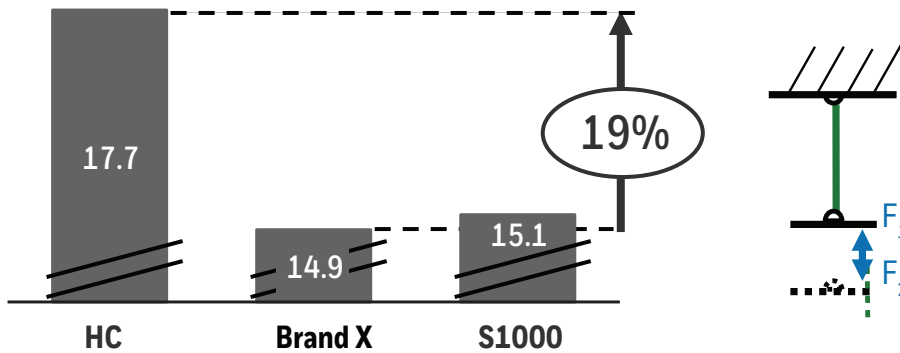


BENDING FATIGUE (CBOS)

- Repetitive sample bending when moved in and out of sheave under load
- Metric: Cycles to Failure

Improved Tension Fatigue

Tension fatigue due to fluctuating loads over an extended period of repeated cycles during use results in degradation of the fiber and reduction in the strength of the rope. Spectra® HC fiber with improved fatigue life makes it suitable for various lifting and towing applications.

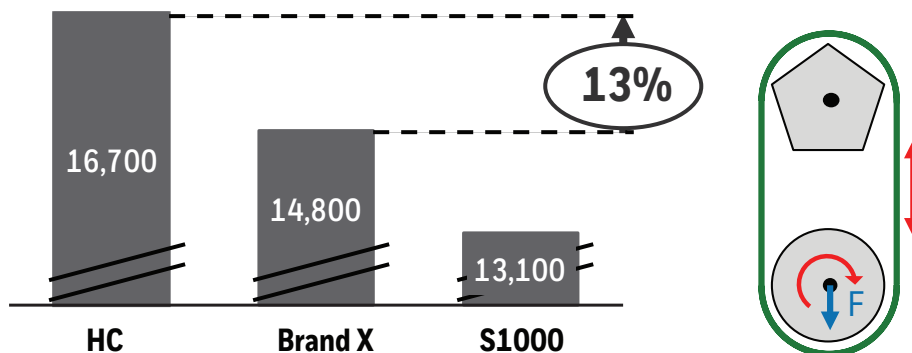


TENSION-TENSION FATIGUE

- Repetitive sample tensioning between low and high load until failure
- Metric: Calculated stress at failure for accumulated cycles (TCLL Stress, gpd)

Better Abrasion Performance

Spectra® HC fiber offers less internal friction for increased rope life and decreased fray. Its resistance to corrosion, UV light damage and many abrasive chemicals make it the ideal fiber for rope applications that require durability and higher strength.



ABRASION RESISTANCE

- Repetitive sample wear when moved across stationary surface under load
- Metric: Cycles to Failure

SPECTRA HC1000 PHYSICAL PROPERTIES

| Product | Denier | Dexitex | Tenacity (g/d) | Breaking Strength (lbs.) | Modulus (g/den) | Elongation (%) | Density (g/cc) | Filament/tow | Filament (dpf) |
|---------|--------|---------|----------------|--------------------------|-----------------|----------------|----------------|--------------|----------------|
| HC1000 | 1600 | 1760 | 38.5 | 136 | 1300 | 3.3 | 0.97 | 360 | 4.4 |

Although Honeywell International Inc. believes that the suggestions regarding the possible uses of the products as well as the other statements contained in this publication are accurate and reliable, they are presented without guarantee or responsibility of any kind and does not constitute any representation or warranties of Honeywell International Inc. either expressed or implied. Information provided herein does not relieve the user from the responsibility of carrying out its own tests and experiments, or safety protocols and the user assumes all risks and liability including, but not limited to, risks relating to results, patent infringement, regulatory compliances, and health, safety and the environment for the results obtained by the use of the products and following the suggestions contained herein.

Honeywell Packaging & Composites

15801 Woods Edge Road
 Colonial Heights, VA 23834
 Toll Free: 1-800-695-5969
 Europe: +32 16 39 12 19
 Asia: +86 21 2894 2969
www.spectrafiber.com



Spectra is a registered trademark of Honeywell International Inc.
 2205 AM HC1000 A4 EN v1 | Jan 2018
 © 2018 Honeywell International Inc

Honeywell